

Welcome to WESLEY MEMORIAL

A UNITED METHODIST CONGREGATION

Our purpose is to make and sustain spiritually healthy followers
of Jesus Christ who live in ways that transform the world.

SUNDAY - NOVEMBER 22, 2015 **TWENTY-SIXTH SUNDAY AFTER PENTECOST** **CONSECRATION SUNDAY**

Contemporary Worship in the Fellowship Hall
9:00 am

Fellowship Brunch & Mission Activity
in the Breezeway Area
9:30 - 11:30 am

Traditional Worship in the Sanctuary
11:00 am

1225 Chestnut Drive • High Point, North Carolina 27262
336.884.2204 • www.wesley memorial.org



Contemporary Worship

Fellowship Hall

November 22, 2015

9:00 am

Gathering Music

Sing, Sing, Sing Chris Tomlin

People of God Gungor

Welcome and Announcements

Prayer Concerns and Prayer

Offering

How He Loves David Crowder Band

Scripture

II Corinthians 8:1-15

Message

"How Far Will You Go" Reverend Dr. James A. Harnish

Consecration and Commitment

Let the Church Rise Jonathan Stockstill

(During the singing by the Praise Team, you are invited to bring your stewardship card to the Lord's Table. Please come by the center aisle and return by the outside aisle.)

Closing

Worship Leaders: James A. Harnish, Guest Pastor; Erin Beall, Associate Pastor for Adult Spiritual Formation and Contemporary Worship; Keith Byrd, Director of Contemporary Music; The Horizon Praise Team.

Welcome!

Thank you for worshipping with us this morning! Please sign the attendance notebooks that the ushers pass out during the announcements. If you are a guest, we ask that you please leave your contact information and a pastor will contact you this week with more information about our church.

Consecration Sunday

The Worship of God

Sanctuary

November 22, 2015

11 am

Welcome!

Thank you for worshipping with us this morning! Please take a moment to sign the attendance notebooks during the announcements. If you are a guest, please leave your contact information and a pastor will contact you this week with more information about our church.

OPENING VOLUNTARY

Music for a Ceremony..... Alfred V. Fedak

WELCOME AND ANNOUNCEMENTS

INTROIT

Choral Fanfare For Christ The King..... H. Hamilton Smith
Chancel Choir

He shall rule from sea to sea, and from the river to the ends of the earth. Alleluia!

Please stand as you are able.

CALL TO WORSHIP

Call to Worship

God loves us and freed us from sin

God has made us part of his kingdom! Hallelujah!

God called us to serve and worship

To God be the glory forever and ever, Amen!

God is the Alpha and the Omega, the first and the last

Who is and who was and who is to come, the Almighty!

We are part of the reign of God!

We are the body of Christ! Hallelujah!

OPENING PRAYER

We come this day, rejoicing, in the presence of the King of Kings, Jesus Christ. At his birth the angels proclaimed his name to be Emmanuel, God with us. Today in this place, in this time of worship, may we truly feel the power and presence of Jesus Christ in our lives. May our hearts and spirits be warmed and challenged to proclaim with our lives, "Christ is Lord!". AMEN.

PROCESSIONAL HYMN No. 694

Come, Ye Thankful People, Come.....ST. GEORGE'S WINDSOR

AFFIRMATION OF FAITH

UM Hymnal No. 881

Please be seated.

CHILDREN'S MOMENTS

ANTHEM

Praises, Thanks And Adoration.....Johann Christian Bechler
Chancel Choir

Praises, thanks and adoration ascend united from our people, so richly blest, so highly favored. Praise the Lord most great and glorious whose love divine endures forever. Bless His name. Praise Him and bless His Holy name. Come join with heart and mind and soul, give praises, thanks and adoration to the Lord our God. Hallelujah. Our thanks ascend from our people so richly blest. Hallelujah. Amen.

PRAYER

OUR LORD'S PRAYER

GIVING OUR TITHES AND OFFERINGS

OFFERTORY ANTHEM

Bless Your Church, O Lord Paul Langston

Chancel Choir

Bless your church, O Lord; for love of Her you died. May She be a beacon of light where love and peace abide. You have chosen us to be consecrated to you. As we learn to live your love may it show in all we do. Lift, Lord, your gracious face; give us your holy peace. May the light of your sweet grace be in us and never cease. The gate of time swings wide; your promise will not fail. In dedicated lives to you our compassion will prevail. Hear our prayer, our compassion will not fail. When we face life's trials, guide us with a promise bright; we will follow with conviction, Lord, led by Jesus Christ, the Light.

Please stand as you are able.

DOXOLOGY No. 94

Praise God, from Whom All Blessings FlowLASST UNS ERFREUEN

Praise God, from whom all blessings flow; praise God, all creatures here below; Alleluia! Alleluia! Praise God, the source of all our gifts! Praise Jesus Christ, whose power uplifts! Praise the Spirit, Holy Spirit! Alleluia! Alleluia! Alleluia!

PRAYER OF THANKSGIVING

HYMN No. 468

Dear Jesus, in Whose Life I SeeHURSLEY

Please be seated.

SCRIPTURE LESSON

II Corinthians 8:1-15

SERMON

"How Far Will You Go"

Reverend Dr. James A. Harnish

CONSECRATION AND COMMITMENT

(During the singing of the hymn, you are invited to bring your stewardship card to the Lord's Table. Please come by the center aisle and return by the outside aisle.)

HYMN No. 694

Come, Ye Thankful People, ComeST. GEORGE'S WINDSOR

Please stand as you are able

HYMN No. 87

What Gift Can We Bring ANNIVERSARY SONG

BENEDICTION AND CHORAL RESPONSE

Dismissal..... Paul Langston

Chancel Choir

May the God of hope now fill us with all joy and peace, may God fill us with joy and peace.

CHIMES OF THE TRINITY

CLOSING VOLUNTARY

Now Thank We All Our God Sigfrid Karg-Elert

Worship Leaders: James A. Harnish, Guest Pastor; Al Ward, Senior Pastor; Erin Beall, Associate Pastor for Adult Spiritual Formation and Contemporary Worship; Jared Stine, Associate Pastor for Congregational Care; Debbie Foust, Director of Children's Ministries; Anne Carroll, Director of Music Ministries; Frank Pifferetti, Organist; Chancel Choir; Elizabeth Boger and Samantha Mickey, Acolytes; Neil Brown, Crucifer; Gary Yates, Sound Engineer.

Ushers for the month of November: Brett Barbour, Edwin Bass, Daniel Dale, Bart Lassiter, Bob Niebauer, and Bill Russell.

Service Notes:

The Call to Worship and Opening Prayer were written by Nancy Townley and appeared on ministrymatters.com.

Musical texts are reproduced within this document by permission under OneLicense.net A721606.

Greeters for the month of November:

Jim Adams, Linda Dale, Jerry Tucker, Kay Tucker

Acknowledgments~

The flowers in the Sanctuary are given to the Glory of God and in loving memory of Phil and Hazel Pugh, Mrs. Ella Parker Pugh, William Hurley and Elyer Lewallen Davis, Sgt. W. H. Davis, Jr., Alta Mae Davis, Dougan Davis, Lucille Davis Bizzell and Olin and Polly Davis by Phyllis Pugh.

Correction from last Sunday's flower announcement. We apologize for any inconvenience. It should have read: Flowers in the Sanctuary are given to the Glory of God and in memory of Charles and Scottie Tucker, and Hubert and Ellen Leach by Jerry, Kay, Kelly and Dan Tucker.

Thanks & Praise to ~

... to the Stewardship Team for planning & organizing today's Consecration Sunday festivities: Andy Bills, IV Culp, Tommy Langley, Katherine McMullan (and her team of decorators), Ivey Orr, Mary Nifong and Charlie Rowe.

... to Susan Hedrick, Alison Collins and Katie Hutchens for leading our Sunday afternoon Bible Explorers groups. We had three great groups of children ages K - 5th grade. This could not be possible without their willingness to give of their time and gifts in ministry to these children.

... to all those who brought items for our Kids Kare bags. We will be able to supply 30 bags of basic items as well as a few extras like toys, books and art supplies. These bags will go to boys and girls in the High Point area that are currently without permanent housing.

... to Brenda Bradner, Carol Huff, Lee Huff, Anne Andrews, Sarah Woollen, Wendy Kitley, Joyce Stephens, Dottie O'Connor and Ann Linthicum for dressing the Lovefeast Candles for the Lovefeast.

... to Pat Neal, Brenda Bradner, Ann Linthicum and DAR members for serving the Bereavement Reception for the family and friends of Sue Anderson.

Ways to CONNECT



JOIN US FOR OUR CHRISTMAS TREE LIGHTING

Join us Friday, December 4 at 6:30 pm as we gather around the Front Circle to sing carols, enjoy cookies, and countdown to light our Christmas Tree. We will celebrate together, rain or shine, so invite your family, friends and neighbors to this wonderful Christmas tradition!

DON'T MISS THE SPECIAL CHANCEL CHOIR PERFORMANCE

On December 6 at the 11 am worship service, the Chancel Choir will sing "On Christmas Night" by Bob Chilcott with harp, flute, oboe, organ and percussion. The Chancel Choir purchased On Christmas Night in honor of Howard Coble and Wanna McAnally for their service to the Music Ministries of Wesley Memorial. Join us in the Asbury Room after worship for a reception following worship to greet Howard and Wanna.

JOIN US FOR THE HANGING OF THE GREENS ON SUNDAY, DEC. 6

We have an evening of fun and fellowship planned for all ages, with activities for children K - 5th grade beginning at 4:30 pm in the Preschool and Elementary Sunday school classrooms. Infant care will be available in the Crib Room. Volunteers are needed to assist with the activities in each classroom. Please sign up to help with these outside each Sunday school classroom. Everyone is invited to enjoy dinner together at 6 pm in the Dining Hall. Following dinner we will have a "Carol Sing" and light the decorated Children's Tree. Advance reservations are needed for the Soup and Sandwich dinner. Please RSVP by Tuesday, Dec. 1 by contacting dfoust@wesleymemorial.org or 812-4804.

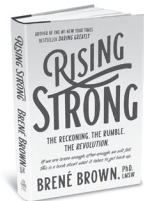
Ways to GROW

DAILY ADVENT DEVOTIONALS BEGIN NEXT SUNDAY

Each day during Advent (Nov. 29 - Dec. 24), a Wesley Memorial member or staff person has written a devotional. Our theme this year is "The Songs of Christmas." Don't miss out! You may sign up to receive these devotionals by email — one per day, for each day of the season leading up to Christmas! Simply sign up on our website at www.wesleymemorial.org/advent2015 and adding your email address. *(Note: A limited run of paper devotional books will be available for members without access to email. If you are able, we ask you to please consider choosing the email option, as we strive to reduce our environmental footprint!)*



MAKE PLANS TO JOIN OUR NEW JANUARY STUDY



The New Year brings with it renewed enthusiasm, resolutions and big plans! Make joining a book study one of those plans! Join Rev. Erin Beall as she leads a discussion-based study on a new book, *Rising Strong* by Brené Brown. Brené Brown is a magnificent teacher, speaker, and writer, whom you may have heard on NPR or seen on ted.com. *Rising Strong* is her second book, following her first, number-one bestseller *Daring Greatly*. Brené specializes in studying shame and fear, and how they can be overcome so that we can be our best selves. Books will be \$20 from the church, or you can order your own on your Kindle. Classes will be Wednesday nights, 6:30-7:45 pm in the Circle View Room, from January 13-February 24.

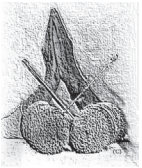
EARN.SAVE.GIVE.

Today is Consecration Sunday and we welcome the Reverend Dr. James A. Harnish as our guest preacher. He is an acclaimed pastor and teacher who served Hyde Park UMC in Tampa, Florida for 22 years. Reverend Harnish will preach at BOTH worship services. In addition, we will formally receive, bless and give thanks for our 2016 pledge commitments. Please note the special schedule for today.

- Contemporary Worship (9:00 am)
 - Fellowship Brunch & Mission Activity (9:30-11:30 am)
 - Traditional Worship (11:00 am)
- Childcare available for ages infant – 4 (8:45 am - 12:15 pm)*

Ways to SERVE

WANT TO JOIN WESLEY MEMORIAL'S PRAYER SHAWL MINISTRY?



Our Prayer Shawl Ministry has made and delivered over 1,600 shawls, blankets, sweaters and other items to members of our church and community! Join the group on Wednesdays at 1:30 pm in the Arts & Crafts Room. Contact Lee Huff, 887-9165; Karen Sumner, 883-8721 or Linda Dale, 884-5121.

MARTHA & STEPHEN GUILD FLEXIBLE VOLUNTEER OPPORTUNITIES

Looking for a volunteer commitment that is flexible? Duties Available: Calling, Setting Tables, Serving (serving drinks, wiping trays, cleaning up at end of meal), or Host or Hostess (opportunity to choose one or a combination of options). Contact Cindy Dominick at 812-4814 or cdominick@wesley memorial.org for questions or to sign-up.

Ways to GIVE

ORDER YOUR CHRISTMAS MEMORIALS TODAY FROM SUE SCHOCH

You can order wreaths (inside and out), trees and poinsettias in honor or in memory of a loved one to decorate the church for Christmas. Don't wait, place your order today! Call Sue Schoch at 812-4824.

ANGEL TREE ARE DECORATED & READY: BRIGHTEN A CHILD'S CHRISTMAS

Each angel on the Angel Tree represents a child identified by our ministry partners at Henderson Settlement and the High Point Jail Ministry. Angel Trees are located in the Narthex, Fellowship Hall Lobby, & Adult Education building. All gifts should be delivered back to the Angel Trees no later than Sunday, Dec.ember 6.

WOULD YOU LIKE TO BE AN ANTHEM ANGEL THIS HOLIDAY SEASON?

Anthem Angels purchase music from a list compiled by the Director of Music Ministries in honor of or in memory of a loved one. When your anthem is played or sung, a note will be placed in the bulletin to honor or memorialize your loved one. If you would like to be an Anthem Angel contact Anne Carroll at 812-4816.

GET YOUR CHRISTMAS TREE FROM THE WESLEY 100 MEN'S GROUP

The Wesley 100 / United Methodist Men are selling fresh cut Christmas Trees from the NC mountains. Orders will be taken by the Wesley 100 at the Wednesday evening dinners and Sunday mornings. Orders forms are also available at the Front Desk. The trees will be available for pick up on Saturday, December 5.



Advent 2015

November 29:

1st Sunday of Advent

Blessing of the Advent Wreath
(all services)

December 4

Tree Lighting on the Circle
6:30 pm

December 6

2nd Sunday of Advent
Blessing of the Greens
(all services)

Chancel Choir sings
"On Christmas Night" at 11 am

Angel Tree gifts are due
Hanging of the Greens
4:30-6:30 pm

December 13

3rd Sunday of Advent
White Christmas (all services)
Children's Nativity at 11 am

December 20

4th Sunday of Advent
Children's Nativity at 8:30 am
(Contemporary Service)

December 24

Christmas Eve Worship
Lovefeast at 5 pm
Contemporary Service at 8 pm
Candlelight Communion
at 11 pm

CALENDAR: November 22-29, 2015

Sunday, November 22, 2015 (Consecration Sunday)

- Consecration Brunch & Mission Activity, 9:30 am, Breezeway
- Children's Music (Grades 2-5), 9:30 am
- Confirmation Class, 4:00 pm, Circle View Room
- Youth Handbells, 4:30 pm, Bell Room
- Student Ministries (MYF), 6:00 pm, Underground

Monday, November 23, 2015

- Women's Bible Study, 10:30 am, Circle View Room

Thursday, November 26, 2015

- Thanksgiving Day Holiday - Church Offices Closed

Friday, November 27, 2015

- Thanksgiving Holiday - Church Offices Closed

Saturday, November 28, 2015

- Contemporary Rehearsal, 9:00 am, Fellowship Hall

Sunday, November 29, 2015 (1st Sunday of Advent)

- Traditional Worship, 8:30 am, Chapel
- Contemporary Worship 8:30 am and 9:45 am, Fellowship Hall
- Children, Student & Adult Sunday School, 9:45 am
- Traditional Worship Service, 11:00 am, Sanctuary
- Confirmation Class, 4:00 pm, Circle View Room
- Missional Network Gathering, 4:00 pm, Fellowship Hall



HAPPY THANKSGIVING



WELCOME VISITORS!

Thank you so much for joining us today in worship. If this is your first time worshipping with us, **please help yourself to a blue Wesley Memorial reusable tote bag as our gift to you.** Inside you will find information about our church. We also invite you to take our First Time Visitor Survey found on the homepage of our website. We hope you will return to worship with us again!

Our faithfulness in attendance

November 15, 2015

All Worship Services: 421

(Goal 505)

CONNECT • GROW • SERVE

OUR CLERGY & MINISTRY STAFF:

Rev. Dr. Al Ward, *Senior Pastor*

812-4808; award@wesleymemorial.org

Rev. Erin Beall, *Associate Pastor for Adult Spiritual Formation & Contemporary Worship*

812-4815; ebeall@wesleymemorial.org

Rev. Jared Stine, *Associate Pastor for Congregational Care*

812-4813; jstine@wesleymemorial.org

Scott Howell, *Director of Administration & Finance*

812-4800; showell@wesleymemorial.org

Jay Butler, *Director of Student Ministries*

812-4812; jbutler@wesleymemorial.org

Anne Carroll, *Director of Music Ministries*

812-4816; acarroll@wesleymemorial.org

Debbie Foust, *Director of Children's Ministries*

812-4804; dfoust@wesleymemorial.org

In the event of an emergency, you simply need to call the main number, 884-2204.

You will then **choose option 1.** It is available 24/7 and will connect you with a pastor.